

# WILDCAT PRIDE



Issue 33

Back to School Edition

USD #263

**For information on Reopening Plans, School Supply Lists and much more, please follow the link provided or find the information on our District Website.**

<https://drive.google.com/file/d/1a8g373bZYUhwepXaxXffep8BPuB0QsXu/view>

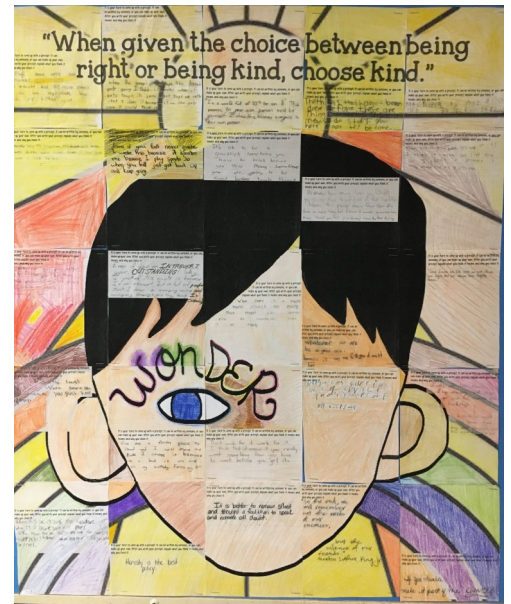
**USD 263**  
**New Student Enrollment**  
Mulvane will begin on-site enrollment for **NEW STUDENTS** by appointment only starting August 5th.  
Please contact the appropriate school starting August 4th from 8:00 AM-3:00 PM to schedule your appointment.

Munson Primary School  
PreK-2nd Grade  
316-777-0151

Mulvane Grade School  
3rd-5th Grade  
316-777-1981

Mulvane Middle School  
6th-8th Grade  
316-777-2022

Mulvane High School  
9th-12th Grade  
316-777-1183



Students from Mulvane Grade School



Student from Mulvane High School

Mulvane USD 263 does not discriminate on the basis of race, color, national origin, sex, religion, handicap/disability, or age. Persons having inquiries may contact the school district's ADA and Section 504 coordinator @ 628 E. Mulvane St. Mulvane, KS 67110.

## KANSAS SCHOOL KINDERGARTEN THROUGH GRADE 12 IMMUNIZATION REQUIREMENTS FOR 2020-2021 SCHOOL YEAR

Immunization requirements and recommendations for the 2020-2021 school year are based on the Advisory Committee on Immunization Practices (ACIP) and the Centers for Disease Control and Prevention (CDC) recommendations. The current recommended and minimum interval immunization schedules may be found on the CDC webpage. The best disease prevention is achieved by adhering to the recommended schedule. However, if a child falls behind, the catch-up schedule is implemented. To avoid missed opportunities, immunization providers may use a 4-day grace period, in most instances, per age and interval between doses. In such cases, these doses may be counted as valid.

K.S.A. 72 - 6261 - Kansas Statutes Related to School Immunizations Requirements and K.A.R. 28-1-20, published July 19, 2019 in the Kansas Register, defines the immunizations required for school and early childhood program attendance.

- **Diphtheria, Tetanus, Pertussis (DTaP/Tdap):** Five doses required. Doses should be given at 2 months, 4 months, 6 months, 15-18 months, and 4-6 years (prior to kindergarten entry). The 4<sup>th</sup> dose may be given as early as 12 months of age, if at least 6 months have elapsed since dose 3. The 5<sup>th</sup> dose is not necessary if the 4<sup>th</sup> dose was administered at age 4 years or older. A dose of **Tdap** is required at entry to 7<sup>th</sup> grade.
- **Hepatitis A (HepA):** Two doses required. Doses should be given at 12 months with a minimum interval of 6 months between the 1<sup>st</sup> and 2<sup>nd</sup> dose.
- **Hepatitis B (HepB):** Three doses required. Doses should be given at birth, 1-2 months, and 6-18 months. Minimum age for the final dose is 6 months.
- **Measles, Mumps, and Rubella (MMR):** Two doses required. Doses should be given at 12-15 months and 4-6 years (prior to kindergarten entry). Minimum age is 12 months and interval between doses may be as short as 28 days.
- **Meningococcal-Serogroup A,C,W,Y (MenACWY):** Two doses required. Doses should be given at entry to 7<sup>th</sup> grade (11-12 years) and 11<sup>th</sup> grade (16-18 years). For children 16-18 years, with no previous MenACWY, only one dose is required.
- **Poliomyelitis (IPV/OPV):** Four doses required. Doses should be given at 2 months, 4 months, 6-18 months, and 4-6 years (prior to kindergarten entry). Three doses are acceptable if 3<sup>rd</sup> dose was given after 4 years of age **and** at least 6 months have elapsed since dose 2.
- **Varicella (Chickenpox):** Two doses are required. Doses should be given at 12-15 months and 4-6 years (prior to kindergarten entry). The 2<sup>nd</sup> dose may be administered as early as 3 months after the 1<sup>st</sup> dose, however, a dose administered after a 4-week interval is considered valid. No doses are required when student has history of varicella disease documented by a licensed physician.

Legal alternatives to school vaccination requirements are found in [K.S.A. 72-6262](#).

In addition, to the immunizations required for school entry the following vaccines are recommended to protect students:

- **Human Papillomavirus (HPV):** Two doses *recommended* at 11 years of age or three doses if the series is started after 15 years.
- **Influenza:** Annual vaccination *recommended* for all ages  $\geq$  6 months of age. Number of doses is dependent on age and number of doses given in previous years.

Vaccination efforts by school and public health officials, immunization providers, and parents are key to the success of protecting our children and communities from vaccine preventable diseases. Thank you for your dedication.

Rev. 1/30/2020

**District Forms and Policies**

Students, parents and guardians will be asked to agree to district policies during the enrollment process. Additional district forms are also available from the district website.

**Payment of Student Fees**

On-line payments for all student enrollment fees can be made using the Skyward Family Access link at: [www.usd263.com](http://www.usd263.com). Payments by cash or check will have to be made in each building.

**Immunization Records**

Current Immunization Records and Child Health Assessments are due at the school your child is attending prior to the first day of school.

**ATTENTION ALL**

**Please double check your immunization records before you receive your physical this summer.**

**Incoming 7th Graders  
TDAP-Booster, Meningococcal (Serogroup A,C,W,Y) and 1st Booster is required for 2020-2021 School Year**

**Incoming 11th Graders  
Second dose of Meningococcal-Serogroup A,C,W,Y**

**REDUCED PRICE & FREE SCHOOL MEALS**

Mulvane USD #263 participates in the Child Nutrition Program administered by the Kansas State Department of Education. Effective July 1, 2020, we will have the F/R lunch application available on-line at a secure web-site. Forms may also be picked up at each building or the District Office and returned to Carla Gilbert at the District Office, 628 E. Mulvane Street. All applications are treated confidentially.

Mulvane USD #263 wants to give each student the opportunity to have a nutritious breakfast/lunch. The website is: [www.usd263.com](http://www.usd263.com) or [www.myschoolapps.com](http://www.myschoolapps.com) If you do not have access to a computer, stations will be set up at the district office, and the Mulvane Public Library.



**ACTIVITY PASSES**

Activity passes for the school year are available at MHS and MMS.

- Prices are: Family Pass \$100.00
- Individual Pass \$50.00
- Sr. Citizen (age 60-69) Pass \$25.00
- Golden Pass (age 70 +) Free

**MRC - BEFORE AND AFTER SCHOOL PROGRAM**

The program start time will be: 6:30 am to the beginning of school M - F / After school until 6:30 pm

One-time enrollment fee of \$30.00 is required for all participants. KDHE paperwork completion is required prior to children attending the program. DCF and Kaw Nation will provide financial assistance.

For more information, you can call 316-777-0858 or e-mail Kande at: [kjones@mulvanerec.com](mailto:kjones@mulvanerec.com).

\* Fees are based on **enrollment**, not on attendance.

	<b>1-2 Days</b>	<b>3-5 Days</b>
AM or PM ONLY	\$20.00	\$30.00
BOTH AM and PM	\$25.00	\$40.00

**SITE COUNCIL**

The purpose of the school site council is to advise the school on such matters as student learning, education programs, school improvement planning, and accreditation issues. The site council also plays an advocacy role for the school regarding the same issues. Specifically, the purpose is to:

- Provide advice and counsel to the school in developing, implementing, and evaluating school performance goals and objectives.
- Provide ongoing support for the students and staff of the school.

If you are interested in serving on a site council, please contact the respective building principal.



Student from Munson Primary



### CHILD FIND CLINICS

Developmental Screening for Children Birth to age 5

(Areas screened: Language, Concepts, Motor, Behavior, Self-help, Social-emotional, Hearing & Vision)

Screenings are held at Munson Primary School, Northeast Hall, 1007 Westview, Mulvane, KS

To schedule an appointment: Call 777-0151 ext. 1124 or email: [mmason@usd263.org](mailto:mmason@usd263.org)

#### CHILD FIND CLINIC DATES 2020 - 21

July 7 & 8, 2020	August 19, 2020
September 2, 2020	October 7, 2020
November 11, 2020	December 9, 2020
January 13, 2021	February 10, 2021
March 24, 2021	April 14, 2021
April 28, 2021	May 12, 2021

### CHILD FIND CLÍNICA

Evaluación del desarrollo de niños desde el nacimiento hasta los 5 años

seleccionados: Lenguaje, Conceptos, motor, comportamiento, audición y vision

Proyecciones se llevan a cabo a través de: USD # 263 Personal de la Primera Infancia

Proyecciones se llevan a cabo en la Escuela Primaria de Munson, Northeast Hall, 1007 Westview, Mulvane, KS

To schedule an appointment: Call 777-0151 ext. 1124, or email: [mmason@usd263.org](mailto:mmason@usd263.org)

#### CHILD FIND CLINIC DATES 2020 - 21

7 & 8 Julio 2020	19 de Agosto 2020
2 de Septiembre 2020	07 de Octubre 2020
11 de Noviembre 2020	9 de Diciembre 2020
13 de Enero 2021	10 de Febrero 2021
24 de Marzo 2021	14 de Abril 2021
28 de Abril 2021	12 de Mayo 2021

**The Mulvane School Board of Education** is committed to providing a positive and productive working and learning environment free from harassment. Sexual harassment, racial harassment and/or disability harassment is strictly prohibited. The Board has adopted policies to protect our students and employees. These policies can be found in the Board Policy Book located on our webpage.

### TITLE 1 INFORMATION

In accordance with federal guidelines, this notification is provided to inform you of your right to request the following specific information concerning the school and teachers:

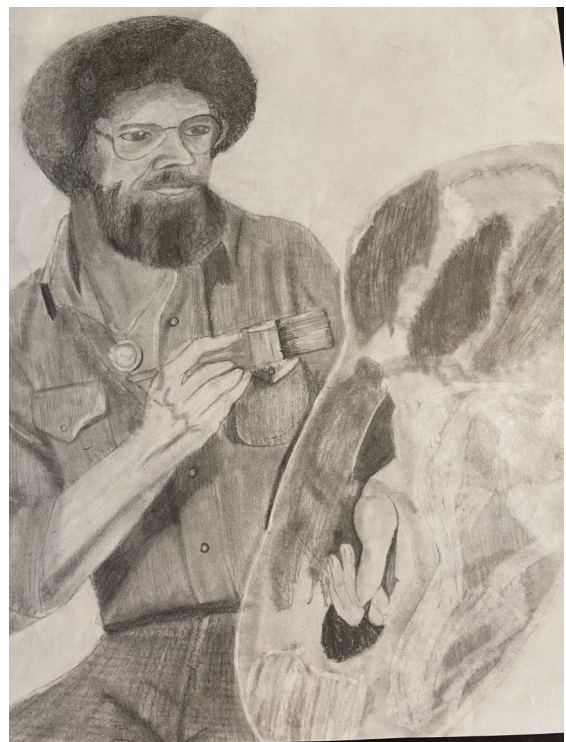
Parents may request information regarding the professional qualifications of their child's/children's classroom teachers and paraprofessionals.

Professional qualifications include:

- Whether or not the teacher has met Kansas licensing criteria of the grade levels and subject areas being taught;
- The baccalaureate degree and any other graduate certification or degree in the field of discipline of both;
- If services are provided by paraprofessionals, their qualifications;
- If the teacher is teaching under an emergency or professional waiver.

We are pleased to inform you that all teachers at Munson Primary School and Mulvane Grade School meet the above criteria. Each one is licensed for the grade levels and subject areas being taught. Each one has a baccalaureate degree and none are teaching under an emergency or provisional waiver. The paraprofessional (s), who work under the direction of the Title 1 and classroom teachers, meet required qualifications for the position. As a parent you will be contacted by the school if your child is taught by a "non-highly qualified" teacher for four continuous weeks or more.

As a parent, you have the right to request your child's state assessment scores. You have the right to obtain the school and school district's state report cards. They may be found at : [https://ksreportcard.ksde.org/home.aspx?org\\_no=D0263&rptType=2](https://ksreportcard.ksde.org/home.aspx?org_no=D0263&rptType=2)



Student from Mulvane Middle School



# Mulvane USD 263

2020-21 School Year Calendar  
[www.usd263.com](http://www.usd263.com)

Calendar subject to change by BOE

Aug. 11	Flex Day
13, 18, 20, 25 & 27	Teacher Professional Learning
Sept. 1 & 3	Teacher Professional Learning
7	No School - Labor Day
8 & 9	Virtual Orientation
10	1st Day of School
Oct. 16	End of 1st Quarter
22	No School - P/T Conferences
23	No School - Comp Day for Conf.
Nov. 25-27	No School - Thanksgiving Break
Dec. 18	End of 2nd Quarter
Dec. 21-Jan 1	No School - Winter Break
Jan. 4	Classes Resume
18	No School - MLK Day
Feb. 15	No School - Comp Day for Conf.
Mar. 5	End of 3rd Quarter
Mar. 12	No School - P/T Conferences
15-19	Spring Break
Apr. 2	No School - Good Friday
May 22	Graduation
26	.5 Student Last Day/.5 Teacher Last Day

2 Hour Late  
 Start Every  
 Wednesday

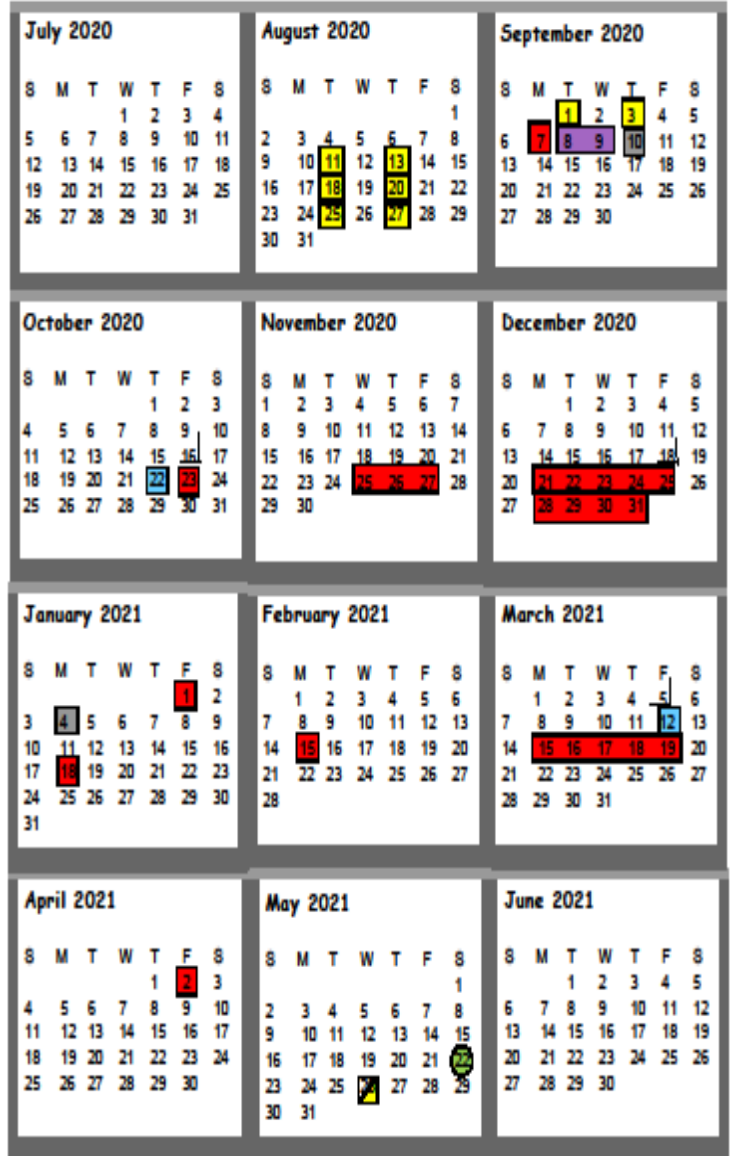
Instruction.....160.5  
 Days

P/T Conferences.....4

Inservice.....8.5

Virtual Orientation...2

Approved by BOE  
 1/21/2020



- Teacher Work Day or Professional Learning - NO SCHOOL
- Virtual Orientation
- No School/Vacation/Comp Day
- First Day of School/Classes Resume
- Parent/Teacher Conferences - NO SCHOOL
- Graduation
- Half Day of School (May 26th - Last day)
- End of Quarter

• Days missed due to weather/unforeseen circumstances will be made up at the discretion of the BOE.



**Mulvane USD 263 Mission Statement:**

*The mission of the Mulvane Public Schools is to prepare all students with academic and life skills while respecting the diverse social, educational, and cultural characteristics of each individual student.*

*The core values of Mulvane students and staff are based on a foundation of:*

- *Respectful, positive relationships*
- *Safe learning environment*
- *Competent, knowledgeable staff*
- *Appropriate social skills and citizenship*
- *Professionalism with integrity*
- *Open and honest communication*

Mulvane USD 263  
 628 E. Mulvane St.  
 Mulvane, KS 67110  
 (316) 777-1102  
 FAX: (316) 777-1103  
 Website: www.usd263.com

**Find us on:**  
[Facebook.com/  
 MulvanePublicSchools](https://www.facebook.com/MulvanePublicSchools)  
[Twitter.com/MulvaneSchools](https://twitter.com/MulvaneSchools)

**Superintendent of Schools**  
 Dr. Jay Ensley

**Board of Education**  
 Jeff Ellis, President  
 Steve Fry, Vice President  
 David Sanders  
 Fred Heersche  
 Stacy Gear  
 Chris Heersche

*Board of Education meetings are  
 held at the Mulvane  
 District Office at  
 7:00 p.m. on the 2<sup>nd</sup> & 4<sup>th</sup>  
 Monday of each month.*

**Munson Primary - 777-0151**

Jennifer Smith, Principal

**Grade School - 777-1981**

Trista Cuthbertson, Principal

**Middle School - 777-2022**

Janet Doud, Principal

Shawn Bennett, Asst. Principal/Athletic Dir.

**High School - 777-1183**

Glenda Cowell, Principal

David Fennewald, Asst. Principal

Doug Evers, Asst. Principal/Athletic Dir.

**Superintendent of Schools - 777-1102**

Dr. Jay Ensley

**Asst. Sup. of Educ. Services - 777-1102**

Dr. Raquel Greer

**Director of Operations/HR - 777-1102**

Brad Canfield

**Financial Officer Director - 777-1102**

Carolyn Young

**Special Education Director - 777-1102**

Dr. Raquel Greer

Jodi Copeland-Baker, Assistant Director

Andrea Palmer, Special Services Coord.

**Technology Director - 777-1102**

Thomas Schmitz

**Food Service/HVAC Director - 777-3003**

Richard Hampton

**Wildcat Pride edited by:** Angela Sagely

*If you have any items for this publication, please contact Angela Sagely at the Administrative Office at 777-1102 or email to [asagely@usd263.org](mailto:asagely@usd263.org)*

USD 263  
 628 E. Mulvane St.  
 Box 130  
 Mulvane, Ks 67110

NONPROFIT ORG.  
 U.S. Postage  
 PAID  
 Permit No. 8  
 Mulvane, KS

POSTAL PATRON  
 MULVANE, KS 67110